



# TARIFAS PVP KITS Q3-2019

\* IVA NO INCLUIDO

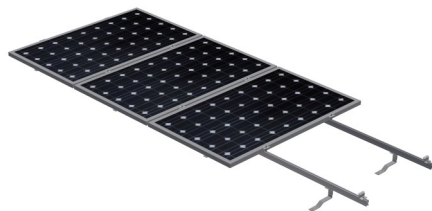
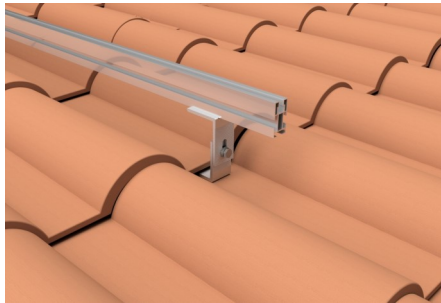
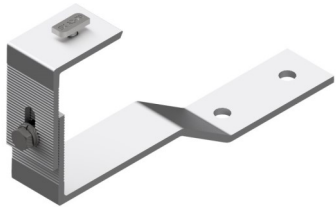
# Soporte sobre cubierta inclinada teja - metálica

## KHT915 - KH915 VR - KH915 - KH915 (1650x1000/2000x1000)

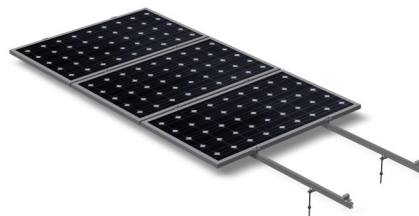
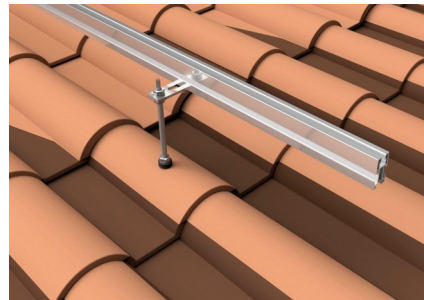
Disposición de los módulos: vertical

### Teja

KHT915 [1x1]	64 €
KHT915 [1x2]	82 €
KHT915 [1x3]	107 €
KHT915 [1x4]	147 €
KHT915 [1x5]	191 €
KHT915 [1x6]	203 €

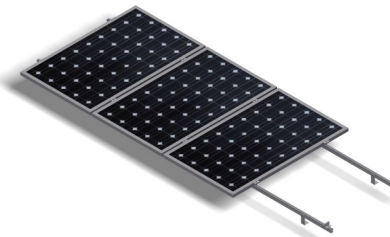


KH915 VR [1x1]	41 €
KH915 VR [1x2]	61 €
KH915 VR [1x3]	88 €
KH915 VR [1x4]	117 €
KH915 VR [1x5]	151 €
KH915 VR [1x6]	161 €

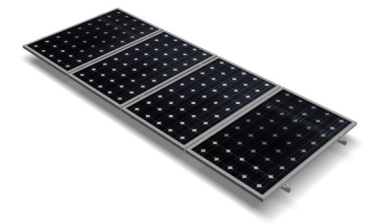
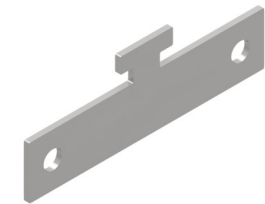


### Metálica

KH915 [1x1]	29 €
KH915 [1x2]	47 €
KH915 [1x3]	71 €
KH915 [1x4]	93 €
KH915 [1x5]	120 €
KH915 [1x6]	134 €



KHX915 [1x1]	26 €
KHX915 [1x2]	45 €
KHX915 [1x3]	70 €
KHX915 [1x4]	92 €
KHX915 [1x5]	117 €
KHX915 [1x6]	132 €



Kit unión Vertical (Ver hoja 15)

10 €

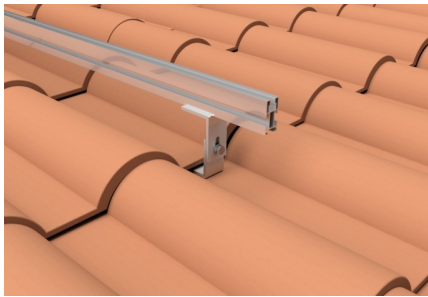
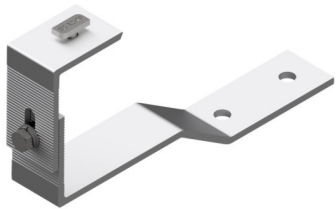
# Soporte sobre cubierta inclinada teja - metálica

KHT915H - KH915 VR H - KH915 H - KH915 H (1650x1000/2000x1000)

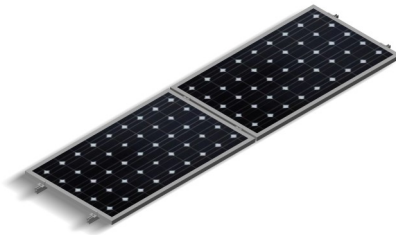
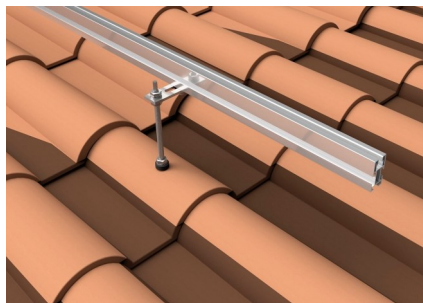
Disposición de los módulos: horizontal

## Teja

KHT915 H [1x1]	79 €
KHT915 H [1x2]	116 €
KHT915 H [1x3]	174 €



KH915VR H [1x1]	54 €
KH915VR H [1x2]	93 €
KH915VR H [1x3]	139 €

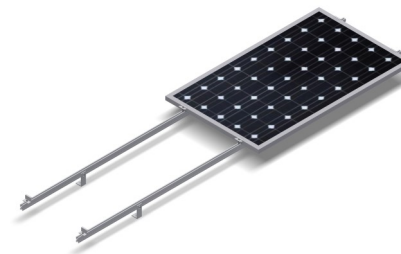


Kit unión Horizontal (Ver hoja 15)

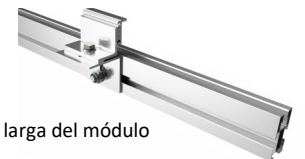
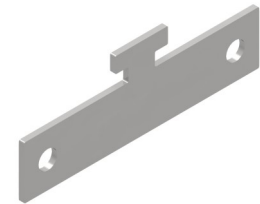
33 €

## Metálica

KH915 H [1x1]	44 €
KH915 H [1x2]	81 €
KH915 H [1x3]	122 €



KHX915 H [1x1]	47 €
KHX915 H [1x2]	88 €
KHX915 H [1x3]	129 €



Detalle fijación Presor lateral regulable para módulo en horizontal

\* Los módulos dispuestos en horizontal siempre se fijan por la parte larga del módulo

# Soporte sobre cubierta inclinada metálica

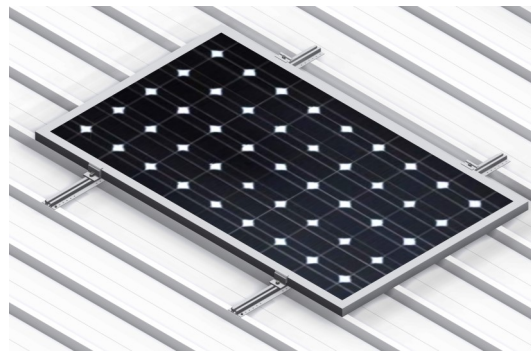
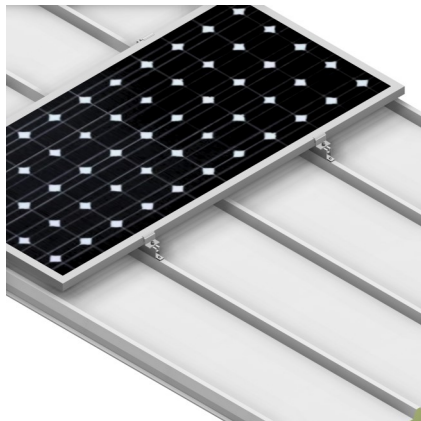
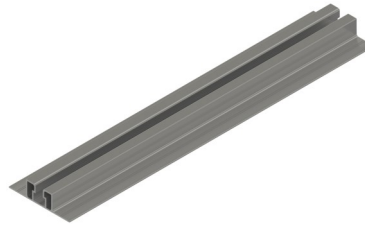
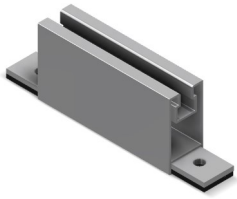
## KHB915 - KHE915 - KHS915 (1650x1000/2000x1000)

Disposición de los módulos: vertical

KHB915 [1x1]	20 €
KHB915 [1x2]	29 €
KHB915 [1x3]	38 €
KHB915 [1x4]	47 €
KHB915 [1x5]	56 €
KHB915 [1x6]	65 €
KHB915 [1x7]	74 €
KHB915 [1x8]	83 €

KHE915 [1x1]	24 €
KHE915 [1x2]	36 €
KHE915 [1x3]	47 €
KHE915 [1x4]	58 €
KHE915 [1x5]	70 €
KHE915 [1x6]	73 €
KHE915 [1x7]	83 €
KHE915 [1x8]	93 €

KHS915 [1x1]	27 €
KHS915 [1x2]	39 €
KHS915 [1x3]	52 €
KHS915 [1x4]	65 €
KHS915 [1x5]	77 €
KHS915 [1x6]	81 €
KHS915 [1x7]	92 €
KHS915 [1x8]	103 €



→ Soportes microrail

# Soporte sobre suelo / cubierta inclinada metálica

CVA915 - CVE915 (1650x1000) CVA915XL - CVE915XL (1650x1000/2000x1000)

Disposición de los módulos: vertical

## CVA915 - CVA915XL

CVA915 [1x1]	67 €
CVA915 [1x2]	88 €
CVA915 [1x3]	131 €
CVA915 [1x4]	154 €
CVA915 [1x5]	205 €
CVA915 [1x6]	234 €

CVA915XL [1x1]	74 €
CVA915XL [1x2]	96 €
CVA915XL [1x3]	142 €
CVA915XL [1x4]	164 €
CVA915XL [1x5]	212 €
CVA915XL [1x6]	251 €



## CVE915 - CVE915XL

CVE915 [1x1]	78 €
CVE915 [1x2]	99 €
CVE915 [1x3]	147 €
CVE915 [1x4]	169 €
CVE915 [1x5]	225 €
CVE915 [1x6]	258 €

CVE915XL [1x1]	96 €
CVE915XL [1x2]	118 €
CVE915XL [1x3]	176 €
CVE915XL [1x4]	199 €
CVE915XL [1x5]	257 €
CVE915XL [1x6]	307 €



Kit unión Vertical (Ver hoja 15)

10 €

→ Inclinaciones estándar 30°

Otras inclinaciones ver Soporte inclinado regulable

# Soporte sobre suelo / cubierta inclinada metálica

## CVA915XL REGULABLE - CVE915XL REGULABLE (1650x1000/2000x1000)

Disposición de los módulos: vertical

CVA915XL Reg. [1x1]	90 €
CVA915XL Reg. [1x2]	114 €
CVA915XL Reg. [1x3]	169 €
CVA915XL Reg. [1x4]	194 €
CVA915XL Reg. [1x5]	259 €
CVA915XL Reg. [1x6]	287 €



CVE915XL Reg. [1x1]	112 €
CVE915XL Reg. [1x2]	136 €
CVE915XL Reg. [1x3]	202 €
CVE915XL Reg. [1x4]	227 €
CVE915XL Reg. [1x5]	304 €
CVE915XL Reg. [1x6]	340 €



Kit unión Vertical (Ver hoja 15)	10 €
----------------------------------	------

# Soporte sobre suelo / cubierta inclinada metálica

CHA915 - CHE915 (1650x1000/2000x1000)

Disposición de los módulos: horizontal

CHA915 [1x1]	74 €
CHA915 [1x2]	126 €
CHA915 [1x3]	185 €



CHE915 [1x1]	83 €
CHE915 [1x2]	139 €
CHE915 [1x3]	203 €



Kit unión Horizontal (Ver hoja 15)

33 €

→ *Inclinaciones estándar 30°*

# Soporte sobre suelo

FV915XL (1650x1000/2000x1000)

Disposición de los módulos: vertical

FV915XL [1x1]	133 €
FV915XL[1x2]	171 €
FV915XL [1x3]	205 €
FV915XL [1x4]	274 €



Kit unión FV (Ver hoja 15)	11 €
----------------------------	------

→ Soporte regulable estándar 25° - 30°  
Otras inclinaciones 35° - 40° / 45° - 50°



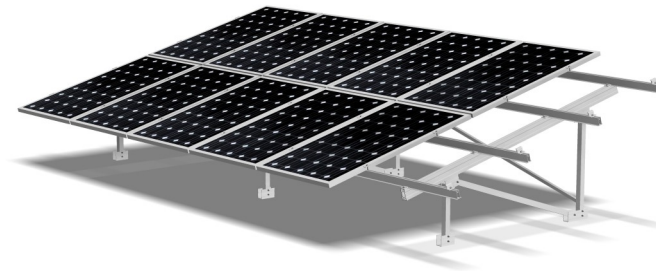
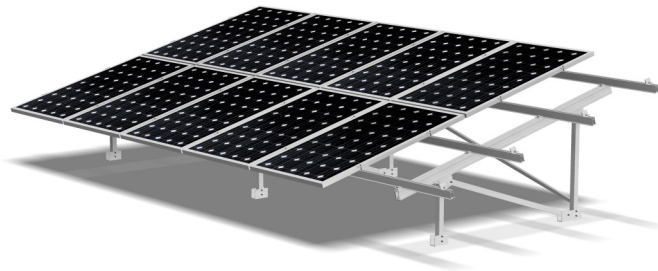
# Soporte sobre suelo

FV925 - FV925XL (1650x1000/2000x1000)

Disposición de los módulos: vertical

FV925 [2x1]	318 €
FV925 [2x2]	362 €
FV925 [2x3]	433 €
FV925 [2x4]	592 €
FV925 [2x5]	652 €
FV925 [2x6]	780 €
FV925 [2x7]	834 €
FV925 [2x8]	887 €
FV925 [2x9]	1.046 €
FV925 [2x10]	1.101 €
FV925 [2x11]	1.253 €
FV925 [2x12]	1.300 €
FV925 [2x13]	1.357 €
FV925 [2x14]	1.511 €
FV925 [2x15]	1.569 €
FV925 [2x16]	1.718 €
FV925 [2x17]	1.775 €
FV925 [2x18]	1.927 €
FV925 [2x19]	1.988 €
FV925 [2x20]	2.034 €

FV925XL [2x1]	354 €
FV925XL [2x2]	400 €
FV925XL [2x3]	470 €
FV925XL [2x4]	646 €
FV925XL [2x5]	707 €
FV925XL [2x6]	849 €
FV925XL [2x7]	903 €
FV925XL [2x8]	1.077 €
FV925XL [2x9]	1.131 €
FV925XL [2x10]	1.308 €
FV925XL [2x11]	1.354 €
FV925XL [2x12]	1.523 €
FV925XL [2x13]	1.580 €
FV925XL [2x14]	1.751 €
FV925XL [2x15]	1.808 €
FV925XL [2x16]	1.973 €
FV925XL [2x17]	2.031 €
FV925XL [2x18]	2.199 €
FV925XL [2x19]	2.260 €
FV925XL [2x20]	2.306 €



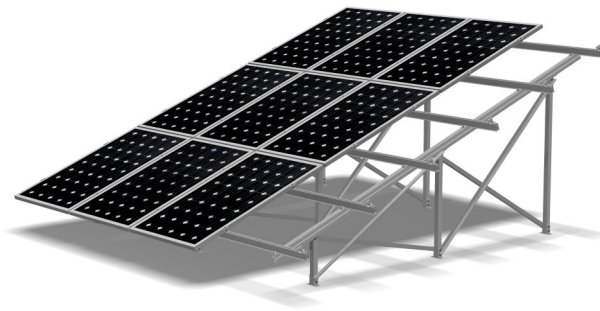
Inclinaciones estándar 20°  
y 30°

# Soporte sobre suelo

FV935 (1650x1000)

Disposición de los módulos: vertical

FV935 [3x1]	647 €
FV935 [3x2]	720 €
FV935 [3x3]	821€
FV935 [3x4]	1.185 €
FV935 [3x5]	1.227 €
FV935 [3x6]	1.260 €
FV935 [3x7]	1.566 €
FV935 [3x8]	1.651 €
FV935 [3x9]	1.957 €
FV935 [3x10]	2.042 €
FV935 [3x11]	2.341 €
FV935 [3x12]	2.417 €
FV935 [3x13]	2.511 €
FV935 [3x14]	2.808 €
FV935 [3x15]	2.902 €
FV935 [3x16]	3.190 €
FV935 [3x17]	3.285 €
FV935 [3x18]	3.288 €
FV935 [3x19]	3.674 €
FV935 [3x20]	3.752 €



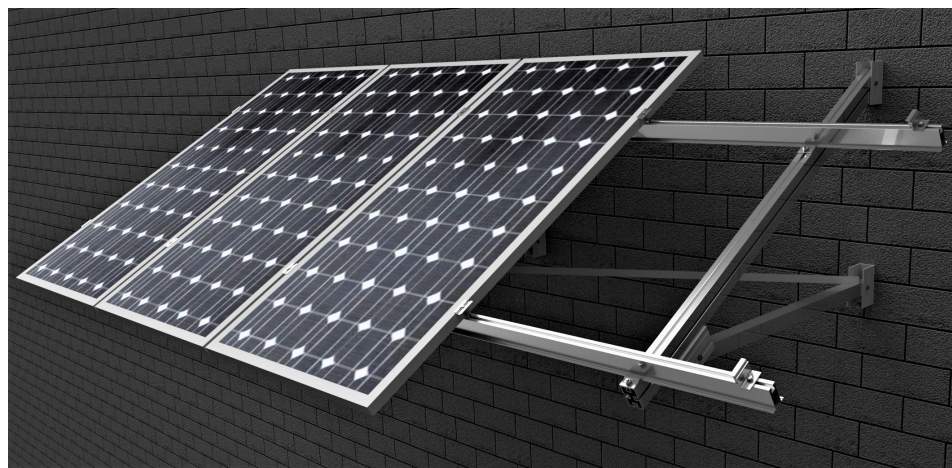
→ *Inclinación estándar 20°*  
*Otras inclinaciones consultar*

# Soporte sobre fachada

WV915XL (1650x1000/2000x1000)

Disposición de los módulos: vertical

WV915XL [1x1]	166 €
WV915XL[1x2]	196 €
WV915XL [1x3]	260 €
WV915XL [1x4]	317 €



Kit unión WV (Ver hoja 15)	11 €
----------------------------	------

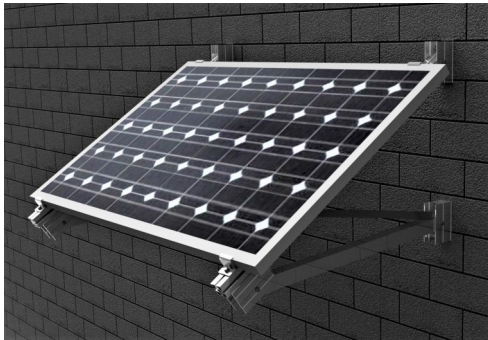
→ *Inclinación estándar 30° - 35°*  
*Otras inclinaciones consultar*

# Soportes universales

WH915XL - WH925XL - THA915 (1650x1000/2000x1000)

Disposición de los módulos: horizontal

WH915XL [1x1]	122 €
WH925XL [2x1]	193 €



WH915XL



WH925XL

Inclinación estándar → 30°

THA915 [1x1]	48 €
--------------	------



THA915

Inclinación estándar → 30°

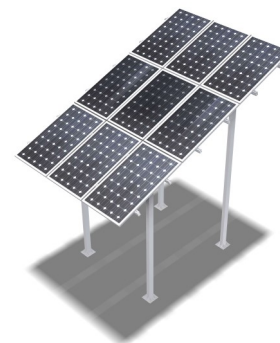
# Soporte elevados

ELVXL (1650x1000/2000x1000)- ELV3 (1650x1000)

Disposición de los módulos: vertical

ELVXL [2x1]	1.110 €
ELVXL [2x2]	1.158 €
ELVXL [2x3]	1.220 €
ELVXL [2x4]	1.280 €
ELVXL [2x5]	1.338 €
ELVXL [2x6]	1.934 €
ELVXL [2x7]	1.990 €
ELVXL [2x8]	2.050 €
ELVXL [2x9]	2.642 €
ELVXL [2x10]	2.702 €
ELVXL [2x11]	2.762 €
ELVXL [2x12]	3.336 €
ELVXL [2x13]	3.414 €
ELVXL [2x14]	3.472 €
ELVXL [2x15]	4.046 €
ELVXL [2x16]	4.106 €
ELVXL [2x17]	4.184 €
ELVXL [2x18]	4.758€
ELVXL [2x19]	4.818 €
ELVXL [2x20]	4.876 €

ELV3 [ 3x1]	1.286 €
ELV3 [3x2]	1.382 €
ELV3 [3x3]	1.472 €
ELV3 [3x4]	1.534 €
ELV3 [3x5]	1.610 €
ELV3 [3x6]	2.310 €
ELV3 [3x7]	2.390 €
ELV3 [3x8]	2.472 €
ELV3 [3x9]	3.170 €
ELV3 [3x10]	3.252 €
ELV3 [3x11]	3.336 €
ELV3 [3x12]	4.006 €
ELV3[3x13]	4.116 €
ELV3 [3x14]	4.200 €
ELV3 [3x15]	4.870 €
ELV3 [3x16]	4.952 €
ELV3 [3x17]	5.062 €
ELV3 [3x18]	5.734 €
ELV3 [3x19]	5.816 €
ELV3 [3x20]	5.900 €



→ *Inclinación 20°*

# Soportes sobre poste

MV915 - STP915 (1650x1000/2000x1000)

Disposición de los módulos: horizontal

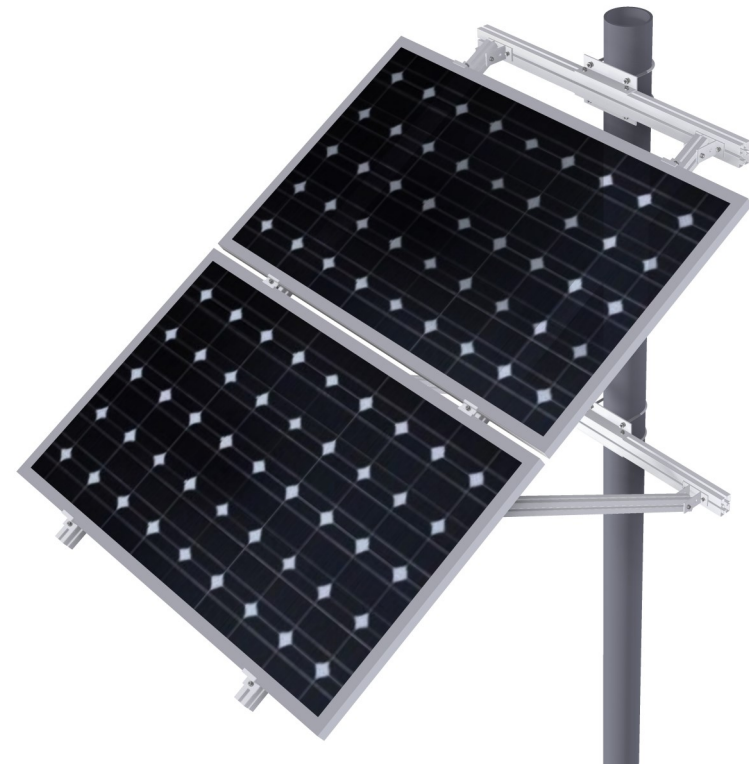
MV915 [1x1]	226 €
MV915 [1x2]	252 €
STP915 [1x1]	264 €
STP915 [1x2]	340 €



MV915

→ Soporte regulable desde 0° hasta 15°

\*Poste incluido



STP915

→ Inclinación 30°  
Para postes de Ø 90-110-120

Otras consultar

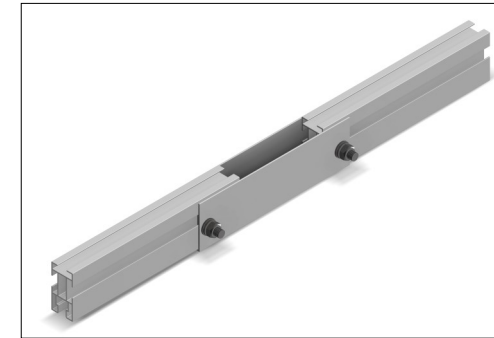
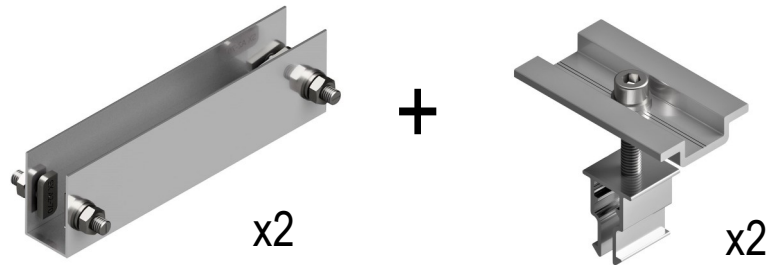
\*Poste no incluido

# Kits de unión

Vertical - Horizontal - FV - WV

## Kit Unión Vertical

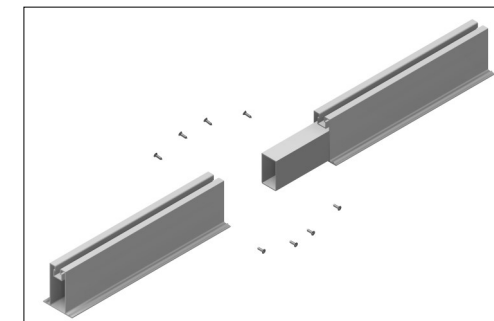
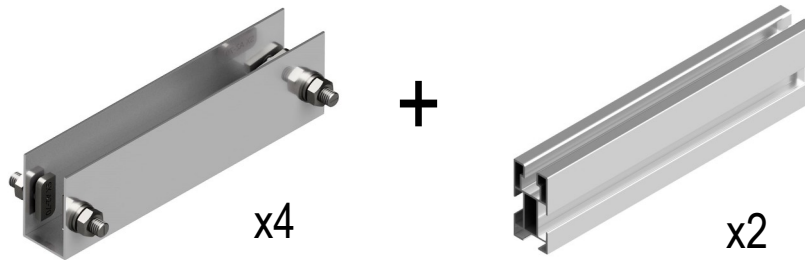
Kit unión Vertical 10 €



Detalle Unión Vertical - Horizontal

## Kit Unión Horizontal

Kit unión Horizontal 33 €



Detalle Unión FV- WV

## Kit Unión FV - WV

Kit unión FV - WV 11 €

